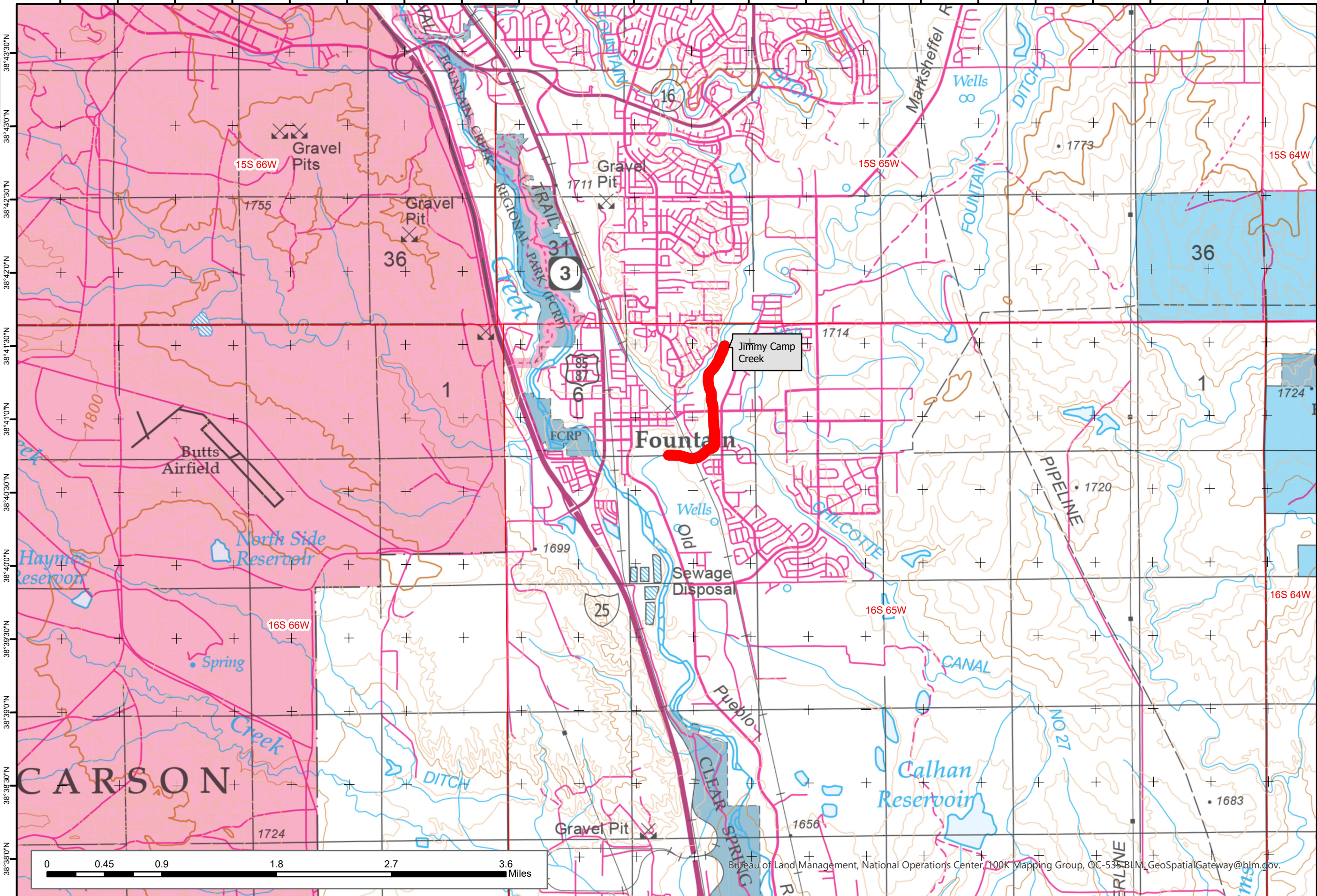




# 2023 Colorado Aquatic Invasive Species Locations

# Map 23: El Paso South

104°47'0"W 104°46'30"W 104°46'0"W 104°45'30"W 104°45'0"W 104°44'30"W 104°44'0"W 104°43'30"W 104°43'0"W 104°42'30"W 104°42'0"W 104°41'30"W 104°41'0"W 104°40'30"W 104°40'0"W 104°39'30"W 104°39'0"W 104°38'30"W 104°38'0"W 104°37'30"W 104°37'0"W 104°36'30"W



**Legend**

- █ Aquatic Invasive Species Buffered Waterbodies
- █ Military Reservation
- █ Private
- █ State

**Note:**  
 For line features the AIS buffer is one half mile upstream/downstream & 200 feet from riparian zone from line segment.  
 For polygon waterbodies if there were point detections the whole water body was shown as having AIS.

Species may include one or more of the following: Eurasian Watermilfoil, Hybrid - Eurasian x Northern watermilfoil, Hybrid Watermilfoil, New Zealand Mudsnaill, Rusty Crawfish, and Zebra Mussel.

1:44,760 Datum: NAD83

Date: 5/30/2023  
 Maps created by BLM Colorado

No warranty is made by the Bureau of Land Management as to the accuracy, reliability, or completeness of these data. Original data were compiled from various sources. This information may not meet National Map Accuracy Standards. This project was developed through digital means and may be updated without notice.

