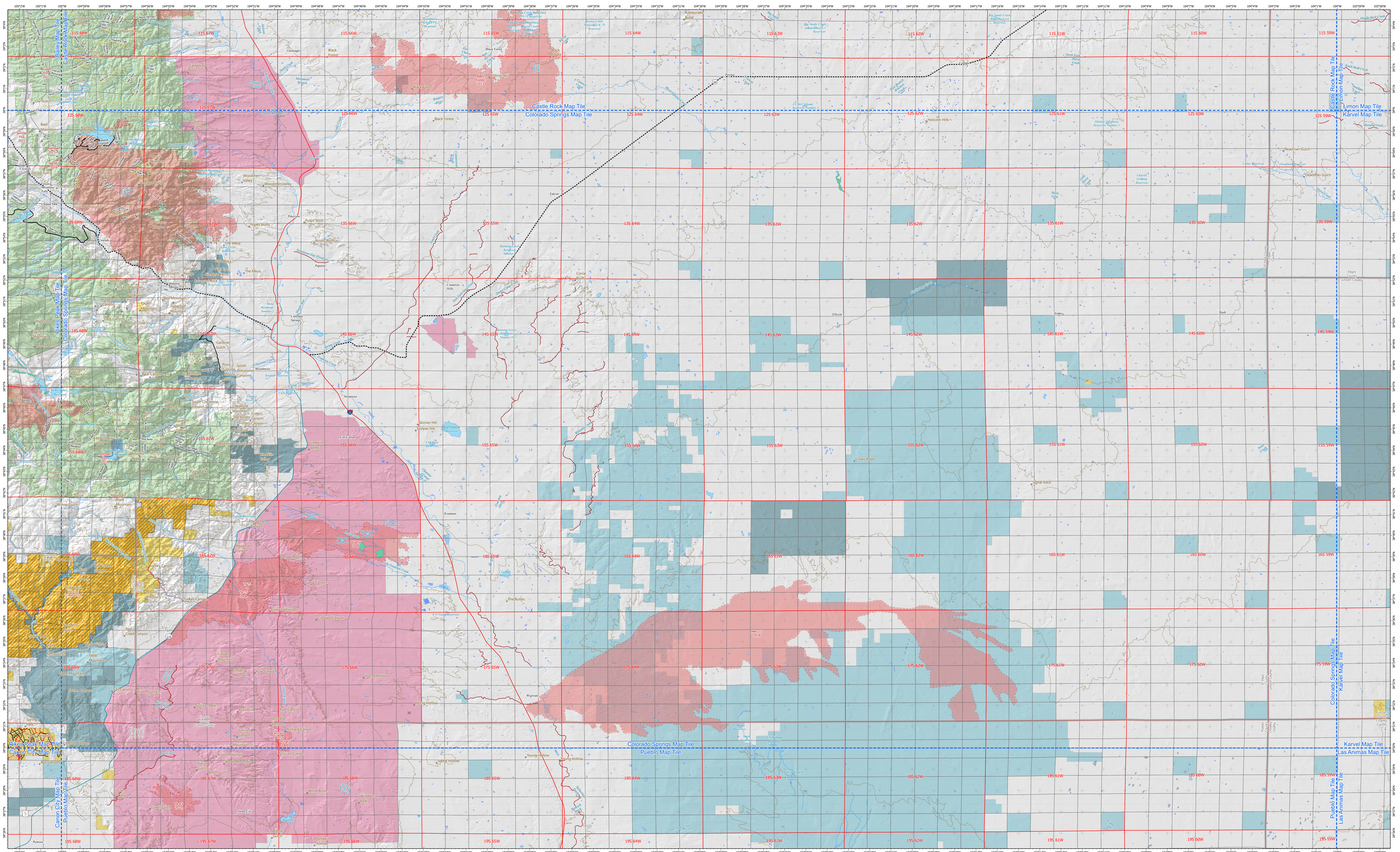
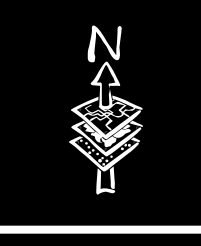




BUREAU OF LAND MANAGEMENT COLORADO FIRE AND AVIATION

Colorado Springs Map

1:100,000



- ### Legend
- BLM Wilderness Study Areas
 - BLM Field Office Area
 - County Boundaries
 - Completed Vegetation Treatments
 - Physical
 - Wildfire Perimeters
 - Historic
 - USFS Roads
 - Dirt Road, Suitable for Passenger Car
 - Paved Road
 - Road, Not Maintained for Passenger Car
 - USFS Trails
 - BLM Routes
 - Other Routes
 - County Roads
 - Interstate
 - State Highway
 - US Highway
 - Private/ Unknown Roads
 - Motorized Routes
 - All Modes of Transportation
 - Shared Motorcycle, ATV and non-motorized
 - Technical High-Clearance Vehicles Only
 - Non-motorized Routes
 - Equestrian and Hiking only
 - Admin Routes
 - Planned Access Restriction
 - Admin Only - Government management uses only (BLM, Fire, etc.)
 - Surface Management Agency - Land Manager
 - Bureau of Land Management
 - Military Reservation
 - State, County, City: Areas
 - Private
 - State
 - US Forest Service
 - Non-BLM Routes
 - Other Routes
 - County Roads
 - USFS Roads
 - Interstate
 - City Streets
 - State Highway
 - US Highway
 - Private/ Unknown Roads

Maps created by:
Bureau of Land Management
Colorado Fire and Aviation
April 2024