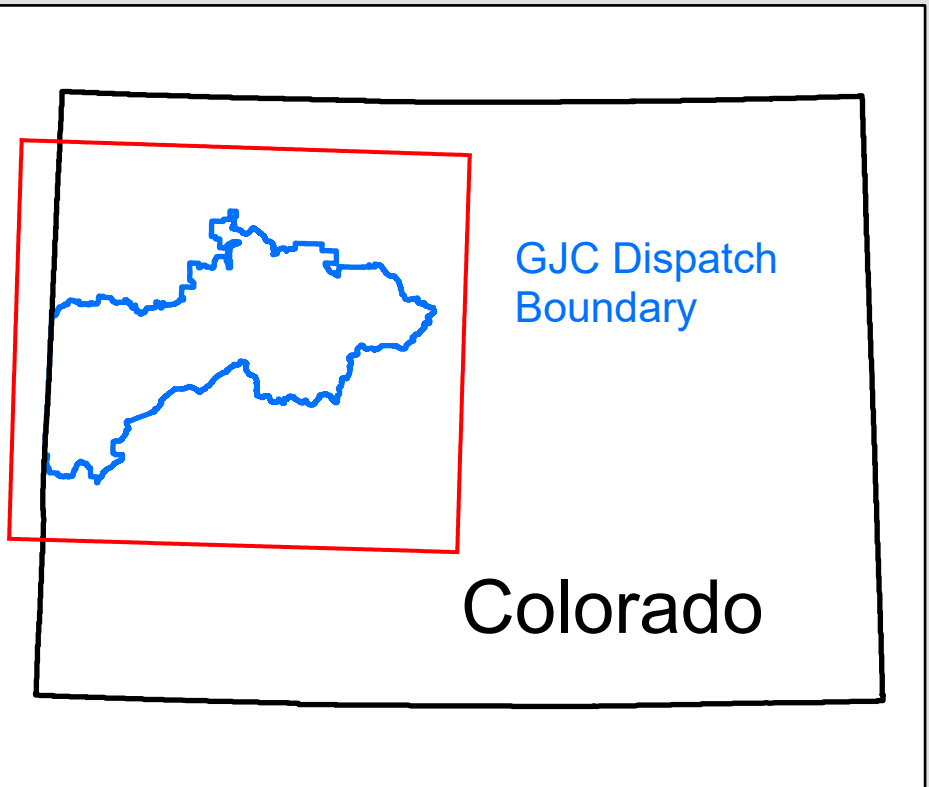
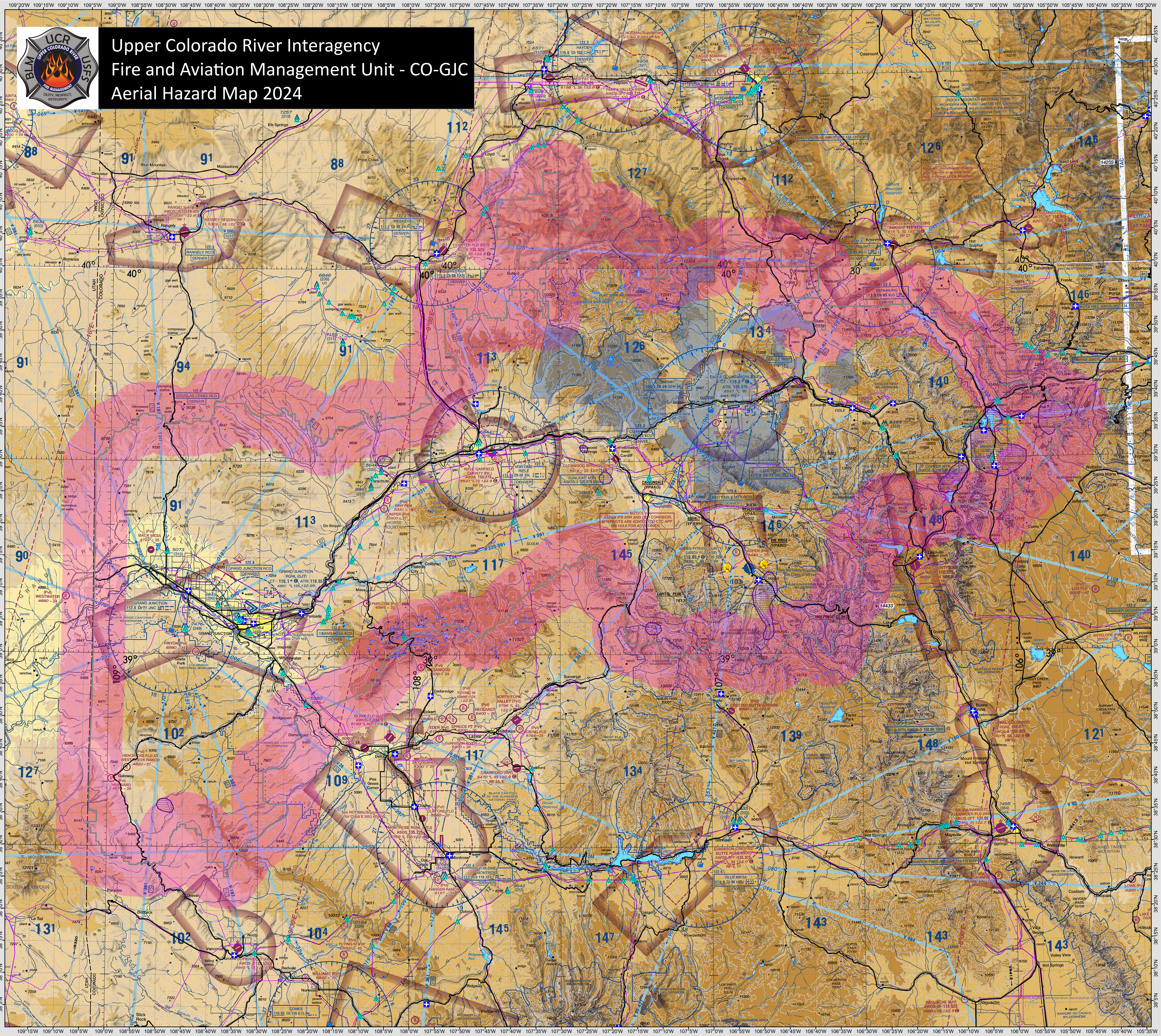




Upper Colorado River Interagency Fire and Aviation Management Unit - CO-GJC Aerial Hazard Map 2024

Data Sources:
VFR Sectional Map Service
https://files.aircgl.com/files/esf_jblxliuzdrsvz/arcris/rest/services/VFR_SectionalMapServer
Updated 1/25/2024

- ### Legend
- Obstructions above 200 ft & below 1000 ft AGL
 - Medical Facilities
 - Dispatch Lines
 - Dispatch Center Boundaries
- ### Miscellaneous
- Hang Glider Activity
 - Glider Operations
 - Aerial Cable Caution Due to Mining Activity
 - HAATS (High Altitude Army Aviation Training Sites)
 - NAVAID_System
 - UCR Deconfliction Zone 5 NM
 - Water Bodies
 - Obstructions 1000 ft or higher AGL
 - Obstructions above 200 ft & below 1000 ft AGL



Level one Trauma Center AND Burn Unit:
Swedish Medical Center
(39° 39.92' N, 104° 58.83' W)

Level one Trauma Center ONLY:
St. Anthony Hospital
(39° 42.94' N, 105° 07.11' W)

Current Date: 3/13/2024

This map was produced by BLM Colorado Fire and Aviation on 3/13/2024. GIS data and product accuracy may vary. This map is not to be used for navigational purposes. It is only to be used as a supplemental means of identifying vertical obstructions and other known hazards. The BLM reserves the right to update, modify, or replace any or all of this data without notifying users.

Note to Pilots and Cooperating Agencies: Not all aerial wires, cableways, and obstructions that could be hazardous to aircraft are shown on this map. Please use extreme caution when flying in unfamiliar areas.

